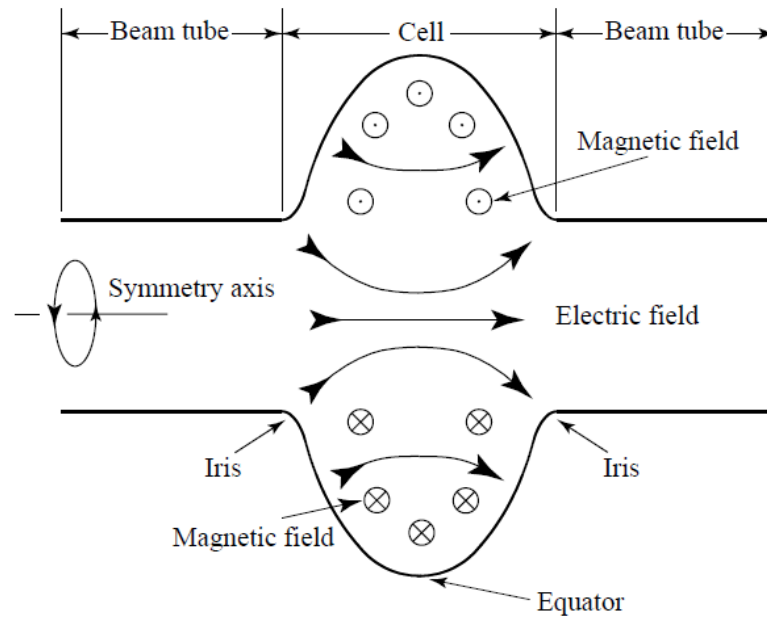


PHY 554

Fundamentals of Accelerator Physics

RF Review

Jun Ma



- EM field of pillbox cavity, TEM₀₁ waveguide mode.
- Energy change of the particle passing through the cavity.
 - Accelerating voltage, transit time factor
- Energy stored in the cavity.
- Power loss in the walls.
- Quality factor.